

PowerAssist® Hoist

A compact fixed speed hoist that automates a new or existing counterweight rigging set. The hoist and counterweight work together, allowing the set to carry any load from none to 2,000 lb (907 kg) without the need to adjust counterweights.

Capability

- Speed: 25 fpm (0.13 m/s)
- Travel: varies based on facility size
- Gross capacity: up to 2,000 lb (907 kg)

Features

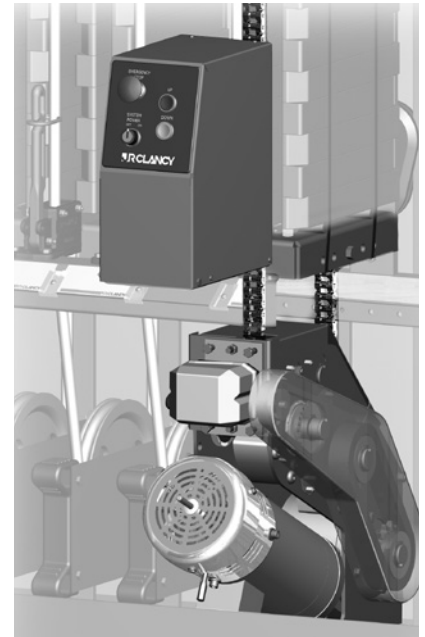
- Easily convert your counterweight set to a motorized system
- Perfect for retrofit or new construction
- Spend less time loading and unloading counterweights
- A safer way to raise and lower sets
- Up to 2,000 lb (907 kg) set capacity
- Protect equipment with a safe, consistent 25 fpm (0.13 m/s) speed

Control Options

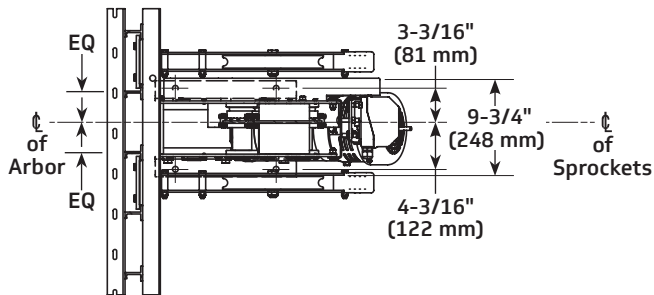
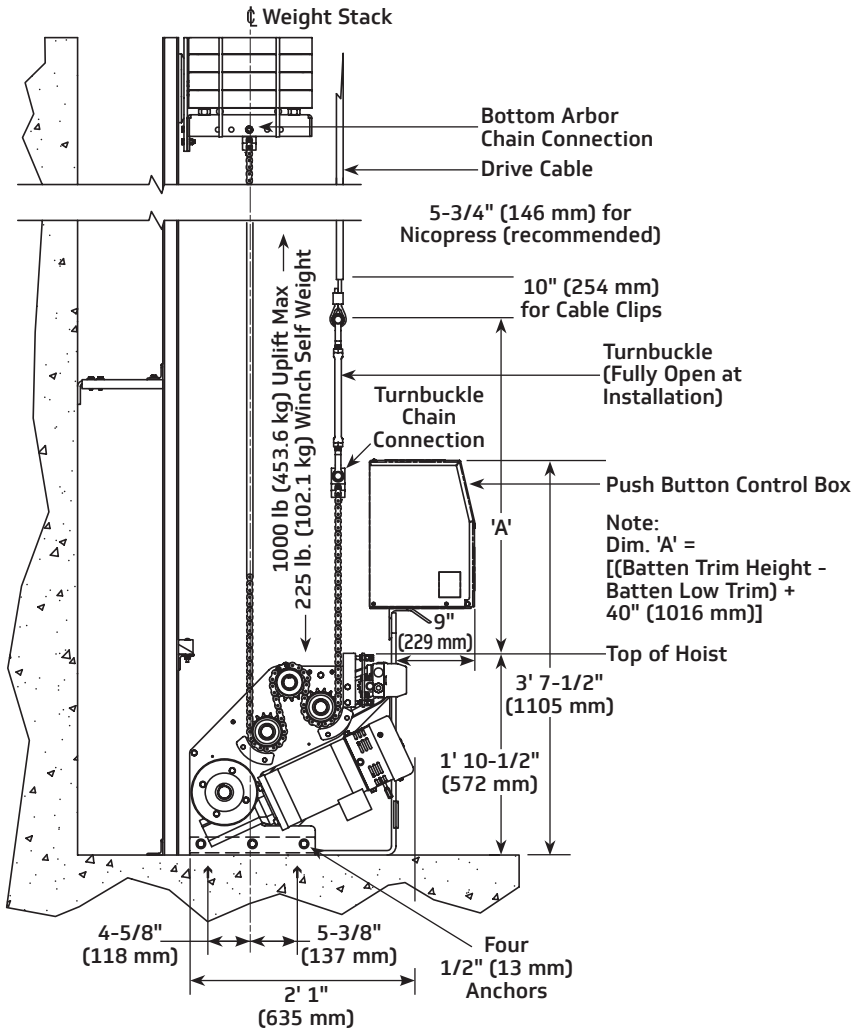
- **Push Button Controls** - Hold to run up and down push buttons are provided so that sets can be run by "eye". A key operated on / off switch and an emergency stop button are provided for security.
- **J.R. Clancy Motion Control Systems** - J.R. Clancy offers a range of control systems to meet your production requirements and budgets. Consoles allow control of multiple hoists, including the ability to create cues that control several sets simultaneously. Contact us for more information.

Safety

- No handling of counterweights or climbing to elevated loading galleries to keep sets in balance. The PowerAssist Hoist handles the out-of-balance load for you.
- Two levels of limit switches are set for your specific site conditions. The normal travel and over travel switches use separate, redundant circuits for added security.
- E-Stop system meets NFPA 79 "electrical standard for industrial machinery".
- Hold to run controls in conformance with NFPA 79 "electrical standard for industrial machinery;" ensure the operator is present when movement is taking place.
- Maintenance Light – regular service is necessary for safety and equipment life for all moving machinery. J.R. Clancy control systems have a maintenance light, indicating when regular system service is required.
- 208V or 480V units are available without the need for expensive, bulky transformers. 380V 50Hz units are also available.
- Motors rated to lift the load have a 1.0 service factor, so they can lift the load every time – not just some of the time.
- Touch safe means the interior of all electrical enclosures are guarded to prevent touching live components, per IEC standard.



Dimensions



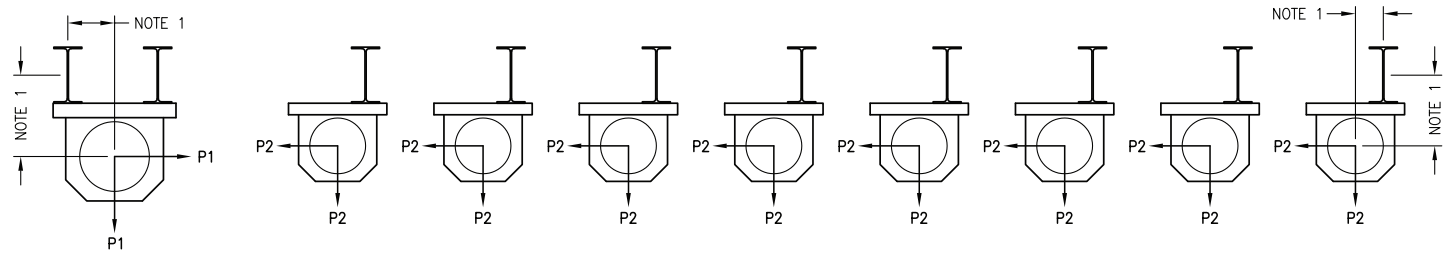
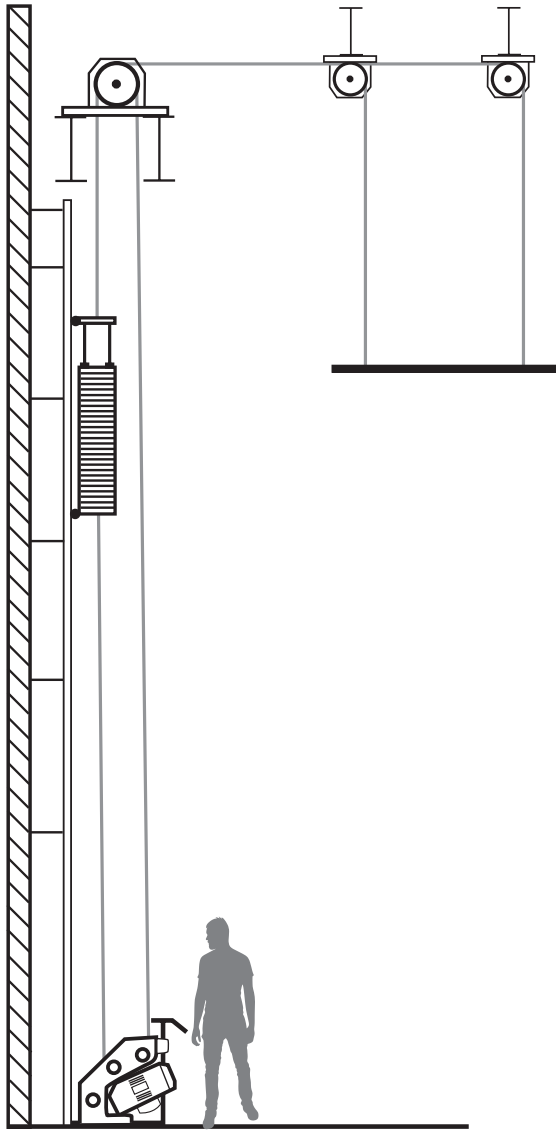
The PowerAssist Hoist is provided with the following components:

- Hoist assembly (floor mounted)
- Control station with integral starter (may be mounted on the locking rail, or other location – please advise when ordering)
- Drive chain assembly (consisting of the drive chain, 3/4" (19 mm) drive line, turnbuckle and associated fittings)
- Warning sign to be installed on the existing counterweight arbor

The double purchase PowerAssist Hoist is provided with the same components, plus:

- Double purchase arbor, with special chain/wire rope sheaves
- Replacement head block, with special chain/wire rope sheave

Loading Diagram



Loading notes:

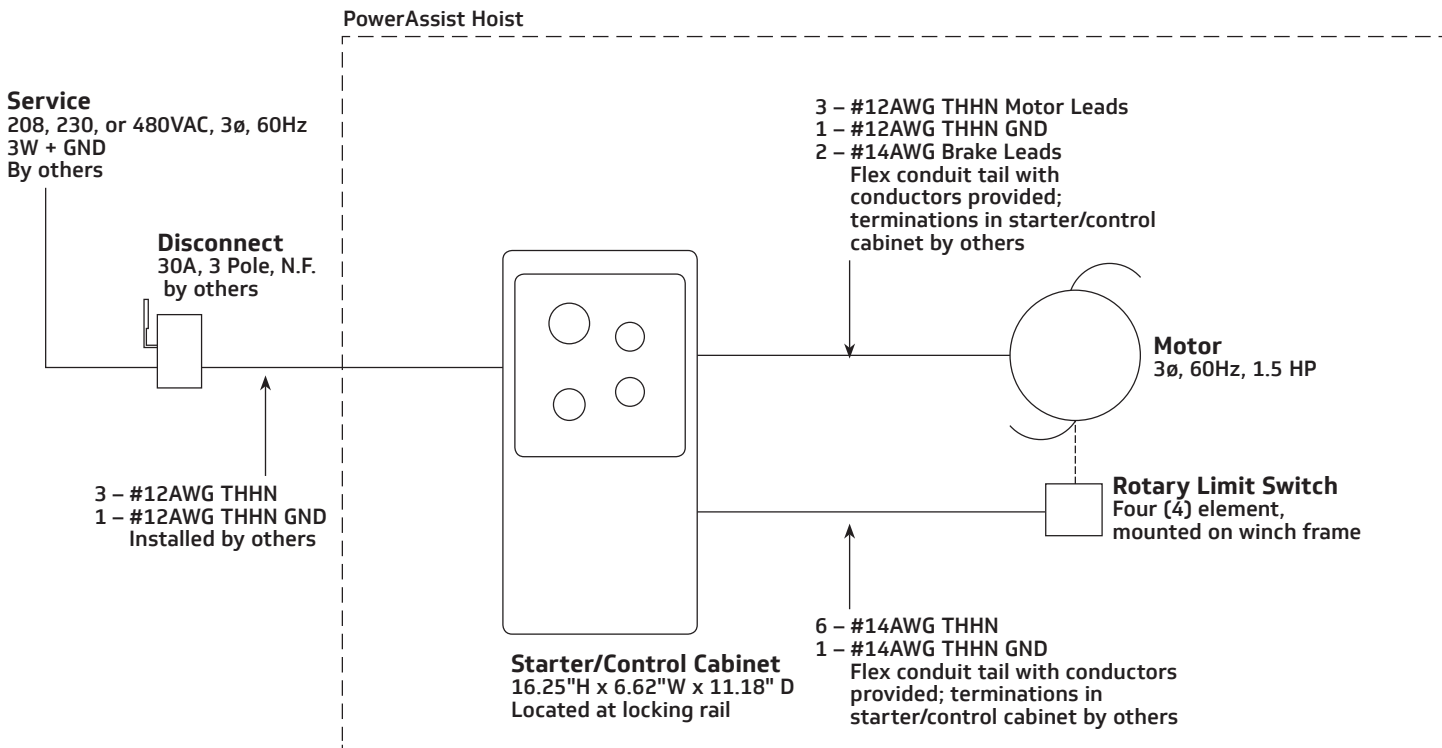
P1 (head block line load) = 0 to 2000 lb (0-907 kg)
 P2 (loft block line load) = 0 to 750 lb (0-340 kg)

1. All block loads act at the block shaft;
 The horizontal and vertical offset between the block shaft and supporting beam centroid may result in torsional loads on beam
2. Set capacity = see Table 1
3. Live load capacity = set capacity - batten weight
4. Total line load on all loft blocks not to exceed set capacity
5. Line load on each loft block not to exceed loft block capacity
6. Hoist load = 1000 lb (454 kg)

Table 1				
Hoist Travel	Hoist Voltage	Speed	Hoist Capacity	Set Capacity
0-90' (0-27584 mm)	208V, 3PH	25 fpm (.13 m/s)	1000 lb (454 kg)	0-2000 lb (907 kg)
	480V, 3PH			
	380V, 3PH (50Hz)	21 fpm (.11 m/s)		

* Call for other power options
 DP system available – see dwg #pa-1

PowerAssist with Push Button Control One Line Riser — Typical



Warranty and Support

Three-Year Warranty against defects in materials or workmanship is provided on all J.R. Clancy equipment. Our warranty is contingent on operation by trained personnel and an annual equipment inspection of a J.R. Clancy authorized technician. 24/7 factory technical support with additional service and assistance provided by a worldwide network of J.R. Clancy authorized dealers.

Inspection and maintenance are available through J.R. Clancy's T.I.M.[®] (Training, Inspection, Maintenance) Program.

Order Information

Model	Control	Type	Speed	Capacity	Weight	HP	Current Draw		
							208V	380V	480V
018-PA	Push Button Station	Single Purchase	25 fpm (0.13 m/s)	2,000 lb (907 kg)	350 lb (159 kg)	1.5 (1.12 kW)	5.8A	3.3A	2.7A
018-PADP		Double Purchase							



© 2024 Wenger Corporation
USA/2024-03

Minnesota Location Wenger Phone 800.4WENGER (493-6437) Wenger Worldwide +1.507.455.4100 | Parts & Service 800.887.7145 | wengercorp.com
GearBoss Phone 800.493.6437 | gearboss.com
555 Park Drive, PO Box 448 | Owatonna | MN 55060

New York Location J.R. Clancy Phone 800.836.1885 JR Clancy Worldwide +1.315.451.3440 | jrclancy.com | 7041 Interstate Island Road | Syracuse | NY 13209